



**INF 25**  
Cross-ply pneumatic Tubeless & Tube type

Size	Ply Rate / Stars	TRA Code	Recommend Rim	Dimension (mm)		Inflation Pressure (kPa)	Load Capacity (Kg) *				
				Width	O.D.		Static	1 km/h	5 km/h	10 km/h	25 km/h
16.00-25	32	E3/L3	11.25/2.0	430	1.490	10	22.500	20.000	18.125	16.875	15.625
16.00-25	28	E3/L3	11.25/2.0	430	1.490	9	20.700	18.400	16.675	15.525	14.375

- Flat profile for better stability and wear
- Cool running
- Open tread to ease cornering



**INF 26**  
Cross-ply pneumatic Tubeless

Size	Ply Rate / Stars	TRA Code	Recommend Rim	Dimension (mm)		Inflation Pressure (kPa)	Load Capacity (Kg) *				
				Width	O.D.		Static	1 km/h	5 km/h	10 km/h	25 km/h
18.00-25	40	E3/L3	13.00/2.5	495	1.615	10	30.600	27.200	24.650	22.950	21.250
18.00-25	32	E3/L3	13.00/2.5	495	1.615	9	27.000	24.000	21.750	20.250	18.750

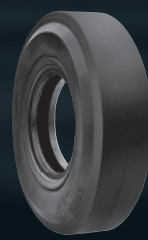
- Thicker tread to minimize punctures
- Cut resistant
- Longer wear profile to grant wider contact area, stability and wear life



**INF 42**  
Cross-ply pneumatic Tube type

Size	Ply Rate / Stars	TRA Code	Recommend Rim	Dimension (mm)		Inflation Pressure (kPa)	Load Capacity (Kg) *				
				Width	O.D.		Static	1 km/h	5 km/h	10 km/h	25 km/h
14.00-24	28	E3/L3	10.00/1.5	375	1.370	10	18.000	16.000	14.500	13.500	12.500

- Optimal stability
- Low risk of punctures
- Good grip and traction



**INF SLEEK**  
Cross-ply pneumatic Tubeless

Size	Ply Rate / Stars	TRA Code	Recommend Rim	Dimension (mm)		Inflation Pressure (kPa)	Load Capacity (Kg) *				
				Width	O.D.		Static	1 km/h	5 km/h	10 km/h	25 km/h
18.00-25	40	L5S	13.00/2.5	498	1.674	10	30.600	27.200	24.650	22.950	21.250
18.00-25	32	L5S	13.00/2.5	498	1.674	9	27.000	24.000	21.750	20.250	18.750

- Smooth tread for maximum resistance to cutting and punctures
- Great stability and longer wear



**Elite XP**  
Solid tire

Size	Ply Rate / Stars	TRA Code	Recommend Rim	Dimension (mm)		Inflation Pressure (kPa)	Load Capacity (Kg) *				
				Width	O.D.		Static	1 km/h	5 km/h	10 km/h	25 km/h
16.00-25			11.25	410	1.442		18.875	16.250	15.000	13.625	12.500
14.00-24			10.00	326	1.318		13.970	12.025	11.100	10.085	9.250
12.00-24			10.00	295	1.178		11.325	9.750	9.000	8.175	7.500
12.00-24			8.50	295	1.178		10.115	8.710	8.040	7.305	6.700

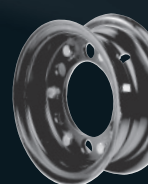
- Premium compound
- Excellent stability and comfort
- Available in different compounds and treads



**Press On Solids**

Complete Range of Sizes Available - Check Dedicated Brochure

- Low rolling resistance
- Premium compound to reduce cuts and chunking
- Available in different compounds and treads



**Wheels**

Complete range of heavy duty application wheels up to 33 inch – Also available in flow forming technology

- Extra strength. Improved control of material thickness
- Better surface finishing, seamless construction
- Less weight
- Double mounting proven experience

\* Load Capacity of tires used for industrial application on flat improved surfaces. For steering wheels the capacity is 80% of the values shown.

**EUROPEAN SALES OFFICES**

**BELGIUM**  
TRELLEBORG WHEEL SYSTEMS  
BELGIUM NV  
HEAD QUARTERS BUSINESS  
UNIT EUROPE  
BRUCSE STEENWEG 7  
9940 EVERGEM  
TEL: +32 92 572 211  
FAX: +32 92 572 230  
Email: twsb.sales@trellborg.com

**CZECH REPUBLIC**  
TRELLEBORG INDUSTRIES CS S.R.O.  
TOUŽIMSKÁ 720  
CZ:199 00 PŘÁHA 9 - LETNANY  
TEL: +42 028 384 2600  
FAX: +42 028 384 1699  
Email: tws.czech@trellborg.com

**GERMANY**  
TRELLEBORG WHEEL SYSTEMS GMBH  
KLEBERSTRASSE 2  
D-40822 METTMANN  
POB 10 01 52, D-40805 METTMANN  
TEL: +49 2104 217 282  
FAX: +49 2104 217 291  
Email: info.tws.de@trellborg.com

**GREAT BRITAIN**  
TRELLEBORG WHEEL SYSTEMS  
RESOLUTION ROAD  
FLAGSTAFF 42  
ASHBY DE LA ZOUCH  
LEICESTERSHIRE LE65 1DW  
TEL: +44 1530 565 656  
FAX: +44 1530 565 600  
Email: info.tws.uk@trellborg.com

**ITALY**

TRELLEBORG WHEEL SYSTEMS SPA  
VIA GIOVANNI GENTILE, 3  
20157 MILANO  
TEL: +39 02 66039 326/327 - 02 66039 1  
FAX: +39 02 66039 331  
DIRECT LINE: 800 45 9954  
DIRECT LINE (FAX): 800 28 7782  
Email: infomarketingtws.it@trellborg.com

**POLAND**

TRELLEBORG INDUSTRIES POLSKA SP. Z O.O.  
UL. SZPAPAGOWA 6/8  
PL 91-211 LODZ  
TEL: +48 42 613 6314  
FAX: +48 42 652 5181  
Email: tws.poland@trellborg.com

**RUSSIA**

TRELLEBORG INDUSTRI O.O.O. (LTD)  
ROSCHINSKIY PROEzd 8, 2-nd  
RU-115419 MOSCOW  
TEL: +7 495 232 5579  
FAX: +7 495 232 2264  
Email: moscow@trellborg.com

**SPAIN**

TRELLEBORG WHEEL SYSTEMS  
ESPAÑA, S.A.  
VALENCIA, 333, 20, 1A  
08009 BARCELONA  
TEL: +34 93 208 14 80  
FAX: +34 93 458 84 74

**SWEDEN**

TRELLEBORG SAVSJO AB  
HENRY DUNKERS GATA 1  
SE-231 81 TRELLEBORG  
TEL: +46 410 510 00  
FAX: +46 410 139 96

**AMERICAN SALES OFFICES**

**CALIFORNIA**

2438 PECK ROAD  
CITY OF INDUSTRY, CA 90601  
TEL: +1 562 695 5686  
FAX: +1 562 695 9040

**GEORGIA**

107 FOREST PARKWAY, SUITE 900  
FOREST PARK, GA 30297  
TEL: +1 404 361 7060  
FAX: +1 404 361 1977

**NEW YORK**

89 LELING AVENUE  
SOUTH HACKENSACK, NJ 07606  
TEL: +1 201 488 2215  
FAX: +1 201 488 0577

**OHIO**

3421 RIDGEWOOD RD, STE 100  
FAIRLAWN OHIO, 44333  
TEL: +1 800 948 TIRE  
FAX: +1 877 204 9930

**TEXAS**

9239 KING ARTHUR DRIVE  
DALLAS, TX 75247  
TEL: +1 214 630 1530  
FAX: +1 214 630 1557

**TORONTO**

TRELLEBORG WHEEL SYSTEMS  
99 GLIDDEN ROAD #1  
BRAMPTON, ON L6T 2H8  
TEL: +1 800 686 8473 OR 800 548 8473  
FAX: +1 877 204 9930

**OVERSEAS SALES OFFICES**

**ARGENTINA**

TRELLEBORG WHEEL SYSTEMS ARGENTINA S.A.  
TUUCUMAN 255 - 4TH FLOOR - OFFICE C  
(C1049MAE) - BUENOS AIRES  
ARGENTINA  
TEL/FAX: +54 11 4000 0070

**AUSTRALIA**

TRELLEBORG WHEEL SYSTEMS AUSTRALIA  
PTY LTD. (TWSA)  
150-152 WILLIAM ROAD  
DANDENONG SOUTH  
VICTORIA 3175  
AUSTRALIA  
TEL: +61 (03) 9794 9041  
FAX: +61 (03) 9794 5044

**BRAZIL**

TRELLEBORG DO BRASIL  
AVENIDA LAZARO BRIGIDO DUTRA, 700  
LAGO DA PRATA  
LENOIS PAULISTA - SP  
BRCEP 18682-050  
TEL: +55 14 3269 3600  
FAX: +55 14 3269 3613

**INDONESIA**

PT TRELLEBORG INDONESIA  
WISMA KORINDO, 4TH FLOOR  
JALAN MT HARJONO KAV. 62  
JAKARTA 12780  
TEL: +62 217 976 211  
FAX: +62 217 976 213

**MALAYSIA**

TRELLEBORG MALAYSIA SDN BHD  
No. 22 JALAN 30B/146  
TAMAN DESA TASI, SIK  
SUNGAI BESI  
57000 KUALA LUMPUR  
TEL: +60 (020) 390 596 388  
FAX: +60 (020) 390 593 169  
Email: tws.asia@trellborg.com

**SINGAPORE**

TRELLEBORG S.E. ASIA PTE LTD  
4 JALAN PESAWAT  
SINGAPORE 619362  
TEL: +65 62 622 112  
FAX: +65 62 622 002  
Email: tws.asia@trellborg.com

**SOUTH AFRICA**

TRELLEBORG SOUTH AFRICA (PTY) LTD  
NEDERVEEN HIGHWAY AND  
PHILLIPS ROAD ROODEKOP  
PO BOX 12459, ELSPARK 1418  
TEL: +27 11 865 3110  
FAX: +27 11 865 2965  
Email: gavin.aboud@trellborg.com

**FACTORIES AND DISTRIBUTION**

**USA**

TRELLEBORG WHEEL SYSTEMS  
AMERICAS INC.  
1501 EXETER ROAD  
AKRON, OH 44312  
TEL: +1 800 948 TIRE  
FAX: +1 877 204 9930

**SRI LANKA**

TRELLEBORG LANKA (PVT) LTD.  
LEVIN DRIVE, SAPUGASKANDA  
MAKOLA  
TEL: +94 11 2400338  
FAX: +94 11 4816808



**TRELLEBORG PORT SOLUTION**



# TRELLEBORG THE PORT SPECIALIST

Trelleborg offers a complete range of tires and wheels used within the harbor industry and container terminals. Container handling requires machines to be flexible and reliable as moving and stacking containers must be done rapidly and efficiently. Hence tires must be stable, failure free and grant longer wear as well as reducing fuel consumption. Trelleborg tires are designed to meet these and tougher requests. Thanks to its multibrand portfolio of specialized products that balance performance and costs, Trelleborg can satisfy every customer necessity. Whatever application is there, Trelleborg has a solution. And if the request is unique, a team of professional engineers is ready to present the best option to suit the application.

**1. Rubber Tire Gantry Crane (RTG)**  
Equipped with a movable crane on top, RTG are used for stacking containers higher and wider than other machines  
**Suggested Trelleborg tire:**  
Infinity INF 26 18.00-25 PR40  
*Other suggested options:*  
INF 4, INF 25, TR-900

**2. Straddle carrier**  
Fastest choice between ship and stacking area can easily pile and move containers up to 4 rows high  
**Suggested Trelleborg tire:**  
Trelleborg TR-900 16.00R25  
*Other suggested options:*  
INF 25

**3. Mobile Port Crane**  
Commonly used to load/unload ships  
**Suggested Trelleborg tire:**  
Trelleborg T-900 14.00-24 PR28  
*Other suggested options:*  
INF 42



## 4. Heavy Range Forklift and RoRo Trucks

Machines designed to withstand loads up to 50 tons in areas where space is an issue  
**Suggested Trelleborg tire:**  
Trelleborg TR-900 16.00R25  
*Other suggested options:*  
INF 4, INF 25, INF 26, T-900, Elite XP

**5. Toplift Container Handler**  
Heavy duty container handler developed exclusively for ports and terminals that can stack up to 5 high loaded containers in narrow gangways  
**Suggested Trelleborg tire:**  
Trelleborg TR-900 18.00R25  
*Other suggested options:*  
INF 4, INF 90, INF SLEEK

**6. Empty Container Handler**  
Counterbalanced machine designed for stacking rapidly and efficiently in narrow gangways empty containers up to 8 high  
**Suggested Trelleborg tire:**  
Trelleborg T-900 14.00-24 PR28  
*Other suggested options:*  
INF 42, TR-900, Elite XP

**7. Reach Stacker**  
Counterbalanced machine for moving containers in short distances very quickly that can stack loaded containers up to 6 high  
**Suggested Trelleborg tire:**  
Trelleborg TR-900 18.00R25  
*Other suggested options:*  
INF 4, INF 90, INF SLEEK

**8. Container Trailer**  
Unpowered vehicle pulled by terminal tractors for transporting containers inside the terminal  
**Suggested Trelleborg tire:**  
Trelleborg Press On Solids  
*Other suggested options:*  
Elite XP, T-900



TR-900  
Radial pneumatic  
Tubeless

Size	Ply Rate / Stars	TRA Code	Recommend Rim	Dimension (mm)		Inflation Pressure (kPa)	Load Capacity (Kg)				
				Width	O.D.		Static	1 km/h	5 km/h	10 km/h	25 km/h
18.00R33	***		13.00/2.5	486	1.836	10	36.695	35.235	34.020	31.590	24.300
18.00R25	***		13.00/2.5	478	1.636	10	32.010	30.740	29.680	27.560	21.200

- Suitable for heavy duty applications where average speeds are high
- Cool running
- Open tread to ease cornering



TR-900  
Radial pneumatic  
Tubeless

Size	Ply Rate / Stars	TRA Code	Recommend Rim	Dimension (mm)		Inflation Pressure (kPa)	Load Capacity (Kg)				
				Width	O.D.		Static	1 km/h	5 km/h	10 km/h	25 km/h
16.00R25	**		11.25/2.0	416	1.495	10	21.140	20.300	19.600	18.200	14.000

- Great stability and energy savings
- Specific tread profile to grant wider contact area, stability and wear life



TR-900  
Radial pneumatic  
Tube type

Size	Ply Rate / Stars	TRA Code	Recommend Rim	Dimension (mm)		Inflation Pressure (kPa)	Load Capacity (Kg)				
				Width	O.D.		Static	1 km/h	5 km/h	10 km/h	25 km/h
14.00R24	**		10.00	386	1.416	10	17.365	16.675	16.100	14.950	11.500
12.00R24	**		8.50	322	1.230	10	11.325	10.875	10.500	9.750	7.500

- Excellent cut and puncture resistance
- Designed to grant stability and wear resistance



T-900  
Cross-ply pneumatic  
Tube type

Size	Ply Rate / Stars	TRA Code	Recommend Rim	Dimension (mm)		Inflation Pressure (kPa)	Load Capacity (Kg) *				
				Width	O.D.		Static	1 km/h	5 km/h	10 km/h	25 km/h
14.00-24	28		10.00	382	1.361	10	14.630	14.050	13.565	12.600	9.690
14.00-24	24		10.00	380	1.360	10	14.345	13.775	13.300	12.350	9.500
12.00-24	24		8.50	322	1.249	10	11.555	11.095	10.710	9.945	7.650
12.00-24	20		8.50	320	1.245	10	11.325	10.875	10.500	9.750	7.500

- Good resistance to fatigue
- High stability
- Optimal grip and traction



INF 90  
Cross-ply pneumatic  
Tubeless

Size	Ply Rate / Stars	TRA Code	Recommend Rim	Dimension (mm)		Inflation Pressure (kPa)	Load Capacity (Kg) *				
				Width	O.D.		Static	1 km/h	5 km/h	10 km/h	25 km/h
18.00-33	40	E4/L4	13.00/2.5	495	1.877	10	36.000	32.000	29.000	27.000	25.000
18.00-33	32	E4/L4	13.00/2.5	495	1.877	9	31.500	28.000	25.375	23.625	21.875

- Suitable for heavy duty applications
- Proven puncture and cut resistance
- Wide tread profile that provides excellent wear on abrasive surfaces



INF 4  
Cross-ply pneumatic  
Tubeless

Size	Ply Rate / Stars	TRA Code	Recommend Rim	Dimension (mm)		Inflation Pressure (kPa)	Load Capacity (Kg) *				
				Width	O.D.		Static	1 km/h	5 km/h	10 km/h	25 km/h
18.00-25	40	IND4	13.00/2.5	480	1.674	10	30.600	27.200	24.650	22.950	21.250
21.00-35	40	E4	15.00/3.0	575	2.005	10	43.740	38.880	35.235	32.805	30.375
21.00-35	36	E4	15.00/3.0	575	2.005	9	41.400	36.800	33.350	31.050	28.750
21.00-35	32	E4	15.00/3.0	575	2.005	7.8	38.160	33.920	30.740	28.620	26.500

- Flat, wide tread profile with dense rubber center that grants excellent stability and wear life at high speeds
- Deep non directional pattern
- Excellent puncture resistance

\* Load Capacity of tires used for industrial application on flat improved surfaces. For steering wheels the capacity is 80% of the values shown.