



PNEUMATIC | TR-900

**WHEN ONLY THE
BEST WILL DO**

PERFORMANCE DEFINED



TIRE LIFE

Trelleborg products guarantee **the best wear** performance in the industry. This results in longer tire life, **additional hours of usage**, reduced downtime and lower maintenance costs.



STABILITY

Trelleborg tires are designed with **exceptional stability**. Our tires are engineered to ensure **proper distribution of heat** and to prevent excessive deflection under load.



ENERGY SAVING

Trelleborg is the **largest approved tire manufacturer to the OEMs**. We work closely with them to ensure we meet the requirements of energy consumption. This results in **reduced fuel costs** for our customers.



COMFORT

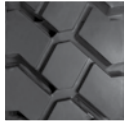
Trelleborg recognizes the importance of a **safe working environment**. Our products are designed to minimize vibration and **keep noise to a minimum level**. We follow the strictest regulations for work safety while providing a comfortable ride.

TRELLEBORG TR-900

The TR-900 is Trelleborg's radial option for industrial application. Designed to withstand today's demanding applications and modern equipment, this radial tire offers better stability, traction and security

with its unique tread pattern and reinforced sidewalls as compared to a conventional tire.

The TR-900 is ideal for applications with long runs. The radial construction allows for higher speed and a reduced heat build-up which helps to extend the life of the tire.



TR-900

Tire Size	LI/SI	Rim	Pattern	Tire Weight	Tread Depth	Width	Overall Diameter	Inflation Pressure	Counterbalanced Forklift Truck: load capacity up to 25km/h		Other Vehicles: load capacity @ 10 km/h
									Load Wheels	Steer Wheels	
				[kg]	[mm]	[mm]	[mm]	[bar]	[kg]	[kg]	[kg]
5.00R8	111 A5	3.00D-8	TR-900	10.2	25	137	468	10.0	1420	1090	1420
6.00R9	124 A5	4.00E-9	TR-900	16.9	25	162	540	10.0	1885	1450	1885
6.50R10	128 A5	5.00F-10	TR-900	20.1	27	180	585	10.0	2340	1800	2340
7.00R12	136 A5	5.00S-12	TR-900	26.8	28	190	670	10.0	2915	2240	2915
7.00R15	143 A5	5.5-15	TR-900	31.5	28	195	736	10.0	3540	2725	3540
28x9R15 (225/75R15)	149 A5	7.0-15	TR-900	33.8	25	230	706	10.0	4225	3250	4225
250R15 (250/70R15)	153 A5	7.0-15	TR-900	37.0	27	252	736	10.0	4745	3650	4745
7.50R15	146 A5	6.0-15	TR-900	40.1	30	215	770	10.0	3900	3000	3900
8.25R15	153 A5	6.5-15	TR-900	47.4	32	232	838	10.0	4745	3650	4745
300R15 (315/70R15)	165 A5	8.0-15	TR-900	61.2	36	312	835	10.0	6695	5150	6695
10.00R20	166 A5	7.5-20	TR-900	85.8	35	294	1062	10.0	6890	5300	6890
12.00R20	176 A5	8.5-20	TR-900	114.7	41	320	1136	10.0	9230	7100	9230
12.00R24	178 A5	8.5-24	TR-900	141.0	39	322	1232	10.0	9750	7500	9750
14.00R24	193 A5	10.0-24	TR-900	228.0	64	390	1416	10.0	14950	11500	14950
16.00R25	200 A5	11.25/2.0-25	TR-900	259.6	56	424	1495	10.0	18200	14000	18200
18.00R25	207 A5	13.00/2.5-25	TR-900	398.9	68	500	1636	10.0	22750	17500	22750
18.00R33	214 A5	13.00/2.5-33	TR-900	496.0	74	497	1838	10.0	27560	21200	27560

